

IIT-JAM: 2017

Chemistry

1. Section-A contains 30 Multiple Choice Questions (MCQ). Each question has 4 choices (a), (b), (c) and (d), for its answer, out of which ONLY ONE is correct. Form Q.1 to Q.10 carries 1 Marks and Q.11 to Q.30 carries 2 Marks each.
2. Section-B contains 10 Multiple Select Questions (MSQ). Each question has 4 choices (a), (b), (c) and (d), for its answer, out of which ONE or MORE than ONE is/are correct. For each correct answer you will be awarded 2 Marks.
3. Section-C contains 20 Numerical Answer Type (NAT) questions. Form Q.41 to Q.50 carries 1 Marks each and Q.51 to Q.60 carries 2 Marks each. For each NAT type question, the value of answer is between 0 to 9.
4. In all sections, questions not attempted will result in zero mark. In Section-A (MCQ), wrong will be deducted for each wrong answer. For all 1 marks questions, 1/3 marks will be deducted for each wrong answer. For all 2 marks questions, 2/3 marks will be deducted for each wrong answer. In Section-B (MSQ), there is no negative and no partial marking provisions. There is no negative marking in Section-C (NAT) as well.

❖ Question Paper

Section-A: MCQ

Q.1 – Q.10 carry one mark each

Q.1 The correct order of the boiling points of the compound is

- (a) $\text{CH}_4 > \text{SiH}_4 > \text{SnH}_4 > \text{GeH}_4$ (b) $\text{SiH}_4 > \text{CH}_4 > \text{GeH}_4 > \text{SnH}_4$
(c) $\text{SnH}_4 > \text{GeH}_4 > \text{CH}_4 > \text{SiH}_4$ (d) $\text{SnH}_4 > \text{GeH}_4 > \text{SiH}_4 > \text{CH}_4$

Q.2 In the following Latimer diagram, the species that undergoes disproportionation reaction is

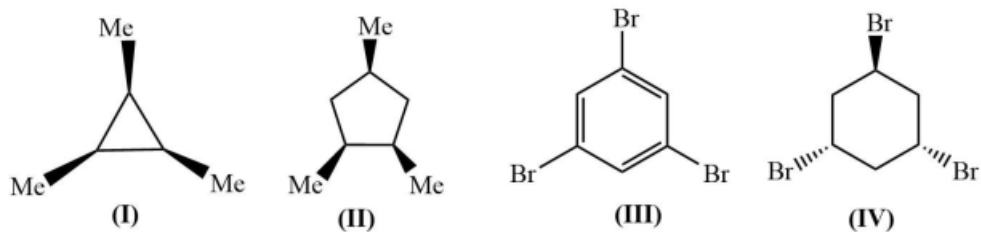


- (a) MnO_4^- (b) MnO_4^{3-} (c) Mn_2O_3 (d) Mn(OH)_2

Q.3 A yellow precipitate is formed upon addition of aqueous AgNO_3 to a solution of

- (a) Phosphite (b) Pyrophosphate (c) Metaphosphate (d) Orthophosphate

Q.4 The compound having C_3 -axis of symmetry are



- (a) I, III and IV (b) I, II and III (c) I and III (d) III and IV

Q.5 The correct order of rate of solvolysis for the following compounds is



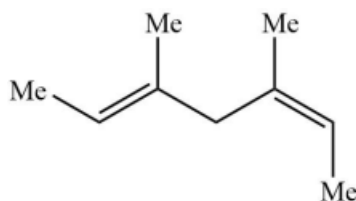
- (a) III > II > I (b) II > I > III (c) III > I > II (d) II > III > I

Q.6 In the following sequence of reactions, the overall yield (%) of O is



- (a) 61 (b) 85 (c) 74 (d) 68

Q.7 Catalytic hydrogenation of the following compound produces saturated hydrocarbon(s). The number of stereoisomer(s) formed is



- (a) 1 (b) 2 (c) 3 (d) 4

Q.8 The number of normal mode of vibration in naphthalene is

- (a) 55 (b) 54 (c) 48 (d) 49

Q.9 The number of degrees of freedom of liquid water in equilibrium with ice is

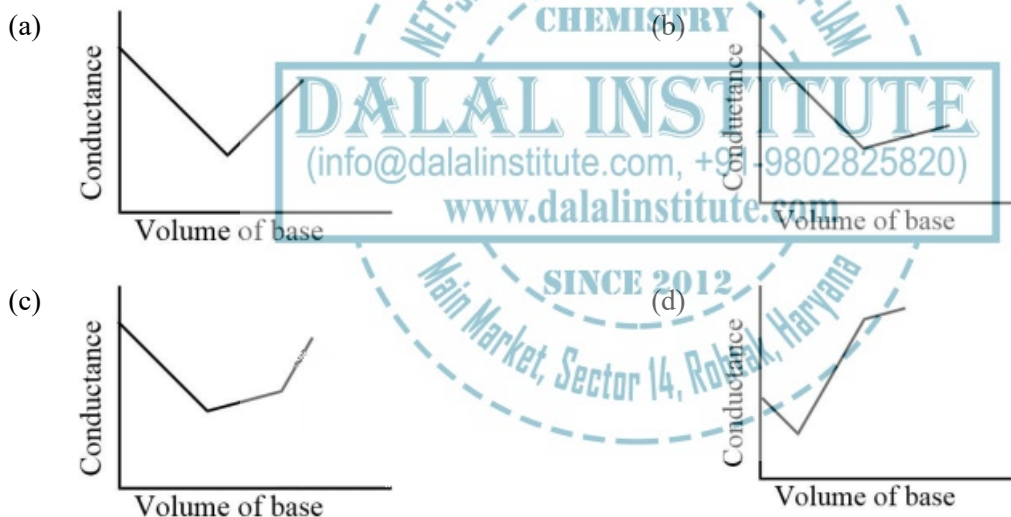
- (a) 0 (b) 1 (c) 2 (d) 3

Q.10 A straight line having a slope of $-\frac{\Delta U^0}{R}$ is obtained in a plot between

- (a) $\ln(K_p)$ versus T (b) $\ln(K_c)$ versus T (c) $\ln(K_p)$ versus $1/T$ (d) $\ln(K_c)$ versus $1/T$

Q.11 – Q.30 carry two marks each

Q.11 In a typical conductometric titration of a strong acid with a weak base, the curve resembles



Q.12 The coordination number of Al in crystalline AlCl_3 and liquid AlCl_3 , respectively, is

- (a) 4 and 4 (b) 6 and 6 (c) 6 and 4 (d) 3 and 6

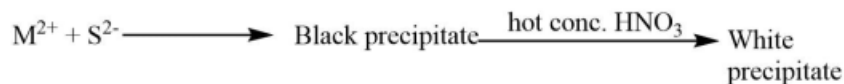
Q.13 The homogenous catalyst used in water-gas shift reaction is

- (a) PdCl_2 (b) Cr_2O_3 (c) $[\text{RhCl}(\text{PPh}_3)_3]$ (d) $[\text{RuCl}_2(\text{bipyridyl})_2]$

Q.14 Nitrosyl ligand binds to d-metal atoms in linear and bent fashion behaves, respectively, as

- (a) NO^+ and NO^+ (b) NO^+ and NO^- (c) NO^- and NO^- (d) NO^- and NO^+

Q.15 The metal ion (M^{2+}) in the following reaction is



- (a) Mn^{2+} (b) Fe^{2+} (c) Cd^{2+} (d) Cu^{2+}

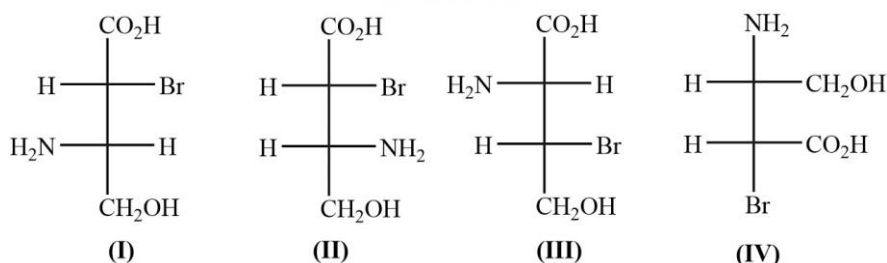
Q.16 The correct order of wavelength of absorption (λ_{max}) of the Cr-complexes is (en = ethylenediamine)

- (a) $[\text{CrF}_6]^{3-} > [\text{Cr}(\text{H}_2\text{O})_6]^{3+} > [\text{Cr}(\text{en})_3]^{3+} > [\text{Cr}(\text{CN})_6]^{3+}$
 (b) $[\text{Cr}(\text{H}_2\text{O})_6]^{3+} > [\text{CrF}_6]^{3-} > [\text{Cr}(\text{en})_3]^{3+} > [\text{Cr}(\text{CN})_6]^{3+}$
 (c) $[\text{Cr}(\text{CN})_6]^{3+} > [\text{Cr}(\text{en})_3]^{3+} > [\text{Cr}(\text{H}_2\text{O})_6]^{3+} > [\text{CrF}_6]^{3-}$
 (d) $[\text{Cr}(\text{en})_3]^{3+} > [\text{Cr}(\text{CN})_6]^{3+} > [\text{Cr}(\text{H}_2\text{O})_6]^{3+} > [\text{CrF}_6]^{3-}$

Q.17 The correct order of enthalpy of the hydration for the transition metal ions is

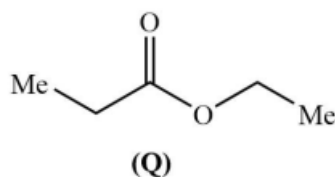
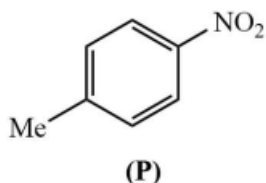
- (a) $\text{Cr}^{3+} > \text{Mn}^{2+} > \text{Co}^{2+} > \text{Ni}^{2+}$ (b) $\text{Ni}^{2+} > \text{Co}^{2+} > \text{Mn}^{2+} > \text{Cr}^{2+}$
 (c) $\text{Ni}^{2+} > \text{Co}^{2+} > \text{Cr}^{2+} > \text{Mn}^{2+}$ (d) $\text{Cr}^{2+} > \text{Mn}^{2+} > \text{Co}^{2+} > \text{Ni}^{2+}$

Q.18 Among the following compounds, the pair of enantiomers is



- (a) I and IV (b) I and III (c) II and III (d) III and IV

Q.19 The number of proton NMR signals for the compounds P and Q, respectively, is



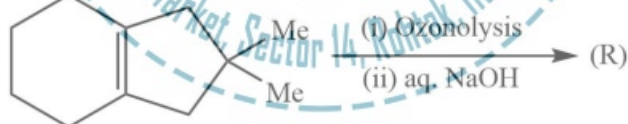
- (a) 3 and 4 (b) 3 and 5 (c) 4 and 3 (d) 5 and 4

Q.20 The correct set of reagents for the following conversion is



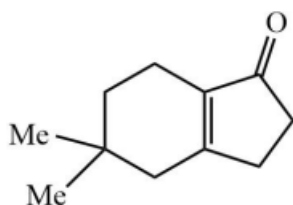
- (a) (i) $\text{NaNH}_2/\text{liq. NH}_3$; (ii) $\text{NaNO}_2/\text{dil. HCl}$; (iii) CuCN , heat
 (b) (i) $\text{HNO}_3/\text{H}_2\text{SO}_4$; (ii) Zn/HCl ; (iii) $\text{NaNO}_2/\text{dil. HCl}$; (iv) CuCN , heat
 (c) (i) $\text{Mg/ether, H}_3\text{O}^+$; (ii) $(\text{EtO})_2\text{CO}$; (iii) NH_4OH ; (iv) PCl_5
 (d) (i) $\text{Mg/ether, H}_3\text{O}^+$; (ii) $\text{HNO}_3/\text{H}_2\text{SO}_4$; (iii) $\text{NaNO}_2/\text{dil. HCl}$; (iv) CuCN , heat

Q.21 The product R in the following reaction is

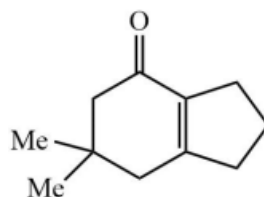


- (a)
- (b)

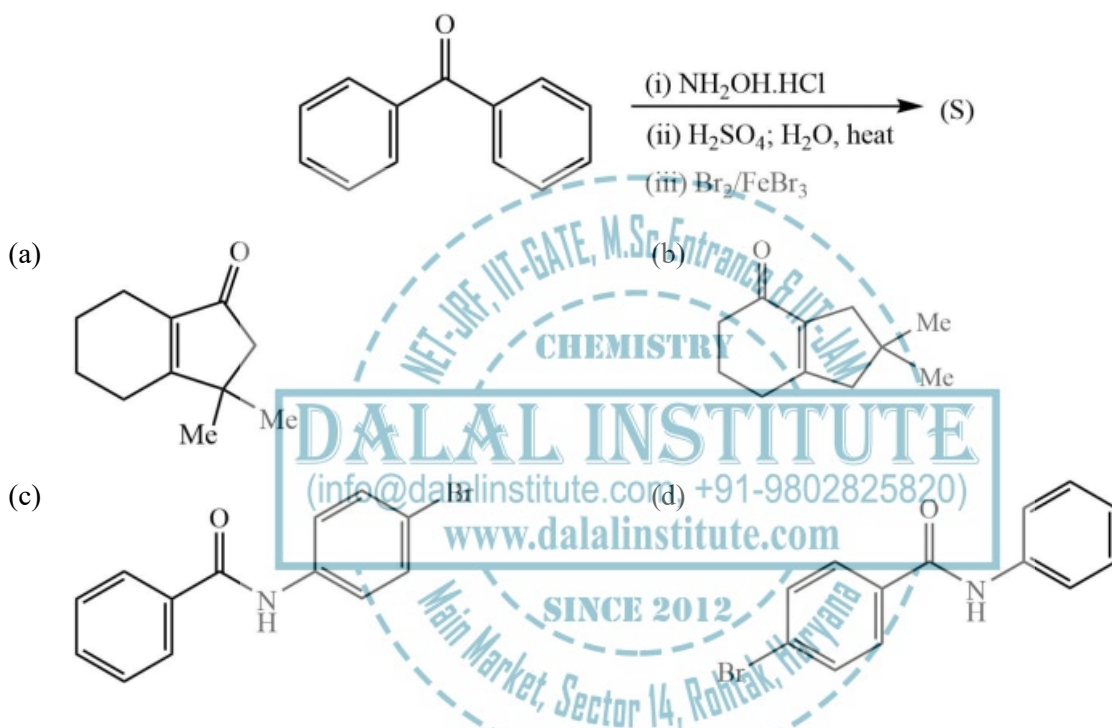
(c)



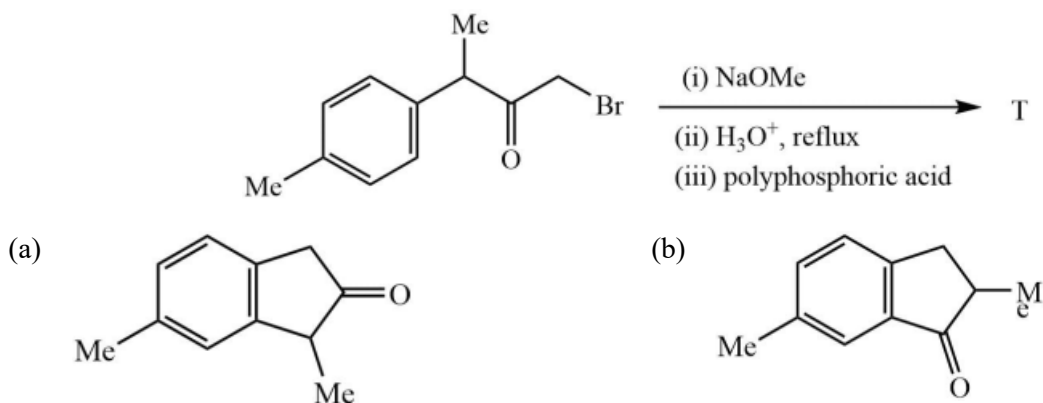
(d)



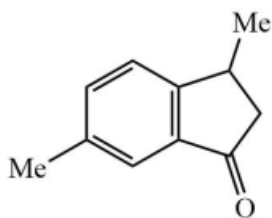
Q22 The major product S of the following reaction is



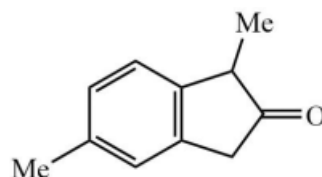
Q.23 In the following reaction, the major product T is



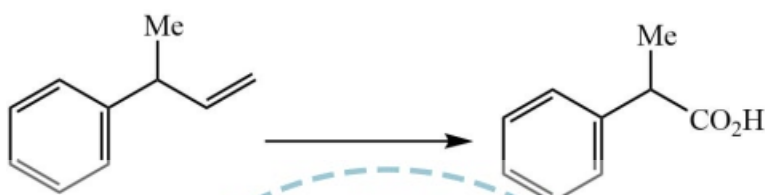
(c)



(d)

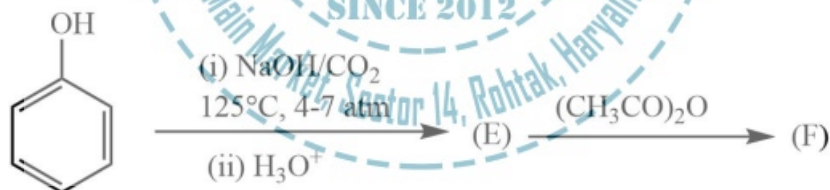


Q.24 The following conversion is carried out using

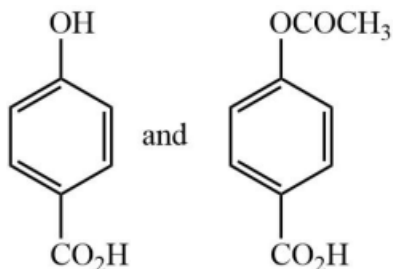


- (a) Hydroboration-oxidation followed by Jones oxidation
 (b) Wacker oxidation followed by haloform reaction
 (c) Oxymercuration-demercuration followed by Jones oxidation
 (d) Ozonolysis followed by haloform reaction

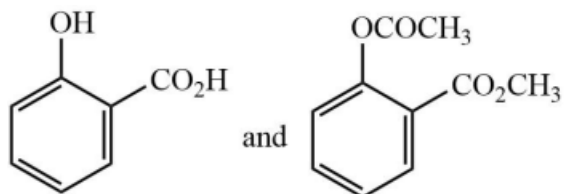
Q.25 In the following reactions, the major product E and F, respectively, are

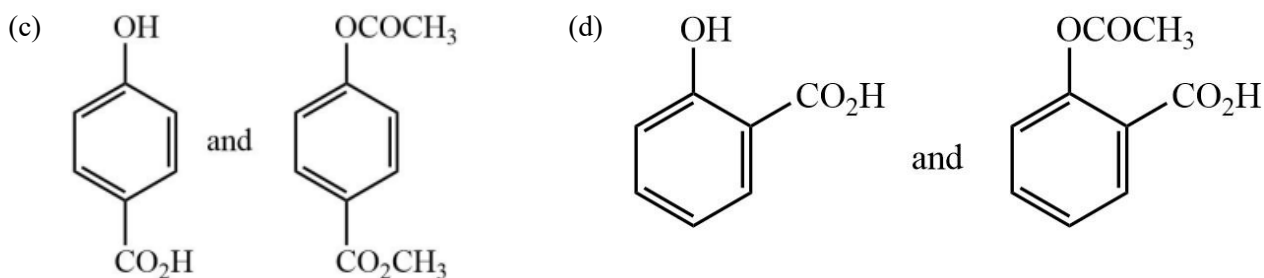


(a)



(b)





Q.26 $\frac{dy}{dx} = -\frac{y}{x}$ is a differential equation for a/an

- (a) circle (b) ellipse (c) bell-shaped curve (d) hyperbola

Q.27 Value of the given determinant is

$$\begin{bmatrix} 1 & 3 & 0 \\ 2 & 6 & 4 \\ -1 & 0 & 2 \end{bmatrix}$$

- (a) -12 (b) 0 (c) 6 (d) 12

Q.28 Ionisation energy of the hydrogen atom in ground state is 13.6 eV. The energy released (in eV) for the third member of the Balmer series is

- (a) 13.056 (b) 2.856 (c) 0.967 (d) 0.306

Q.29 For a first order reaction $A(g) \rightarrow 2B(g) + C(g)$, rate constant in terms of initial pressure (P_0) and pressure at time t (p_t), is given by

- (a) $\frac{1}{t} \ln \frac{p_0}{p_t - p_0}$ (b) $\frac{1}{t} \ln \frac{2p_0}{3p_0 - p_t}$ (c) $\frac{1}{t} \ln \frac{3p_0}{p_t - p_0}$ (d) $\frac{1}{t} \ln \frac{3p_0}{3p_t - p_0}$

Q.30 For a particle in one-dimensional box of length L with potential energy $V(x) = 0$ for $L > x > 0$ and $V(x) = \infty$ for $x \leq 0$, an acceptable wave function consistent with the boundary conditions is (A , B , C and D are constants)

- (a) $A \cos\left(\frac{n\pi x}{L}\right)$ (b) $B(x + x^2)$ (c) $Cx^3(x + L)$ (d) $\frac{D}{\sin\left(\frac{n\pi x}{L}\right)}$

Section-B: Multiple Select Questions (MSQ)

Q.31 – Q.40 carry two marks each

Q.31 The 'heme' containing protein(s) is/are

- (a) Cytochrome C (b) Hemocyanin (c) Hemerythrin (d) Myoglobin

Q.32 Among the following, the species having see-saw shape is/are

- (a) SF_4 (b) XeF_4 (c) ClF_4^+ (d) ClF_4^-

Q.33 The indicator(s) appropriate for the determination of end point in the titration of a weak with a strong base is/are

- (a) Phenolphthalein (b) Thymol blue (c) Bromophenol blue (d) Methyl orange

Q.34 Jahn-teller distortion is/are observed in octahedral complexes with d-electron configuration of

- (a) d^5 - high spin (b) d^3 - low spin (c) d^6 - high spin (d) d^6 - low spin

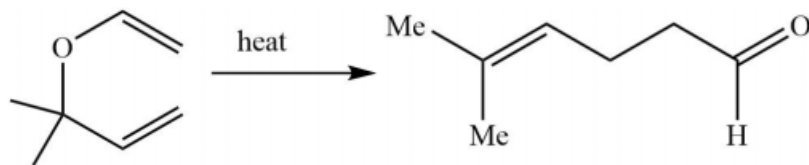
Q.35 Among the following, the correct statement is/are

- (a) Guanine is a purine, nucleobase
(b) Glycine and proline are achiral amino acids
(c) DNA contains glycosidic bonds and pentose sugars
(d) Sucrose is a non-reducing sugar

Q.36 The incorrect statement(s) among the following is/are

- (a) $[4\pi + 2\pi]$ cycloaddition reactions are carried out in presence of light
(b) $[2\pi + 2\pi]$ cycloaddition reaction between a keto group and an alkene is photochemically allowed
(c) $[4\pi + 2\pi]$ cycloaddition reactions are thermally allowed
(d) Transoid dienes undergo Diels-Alder reactions.

Q.37 The following conversion(s) is/are example(s) of



- (a) oxy-cope rearrangement (b) sigmatropic rearrangement
(c) Claisen rearrangement (d) pericyclic reaction

Q.38 IR active molecule(s) is/are

- (a) CO_2 (b) CS_2 (c) OCS (d) N_2

Q.39 Intensive variable(s) is/are

- (a) Temperature (b) Volume (c) Pressure (d) Density

Q.40 Wave function of electromagnetic radiation is observed in

- (a) Diffraction (b) Interference (c) Photoelectric effect (d) Compton scattering

SECTION-C: Numerical Answer Type (NAT)

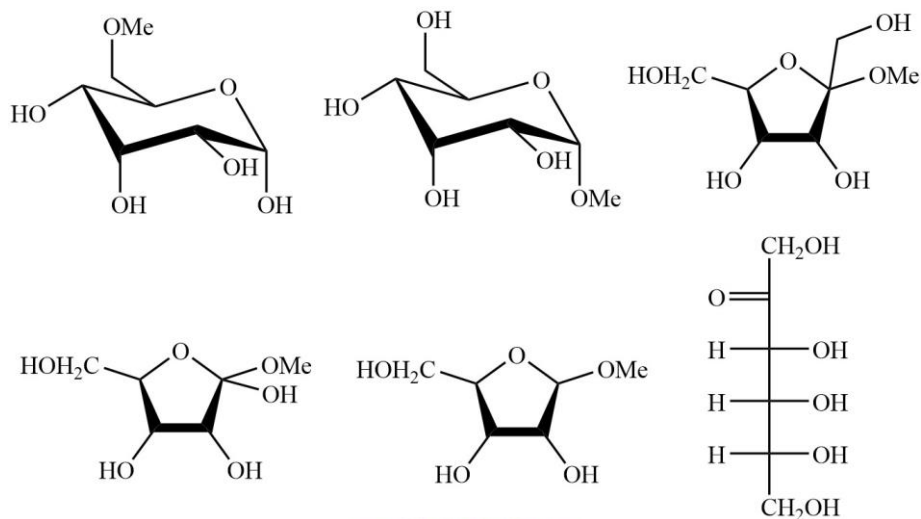
Q.41 – Q.50 carry one mark each.

Q.41 The number of isomeric structures of di-substituted borazine $[\text{B}_3\text{N}_3\text{H}_4\text{X}_2]$ is

Q.42 The number of S – S bond(s) in tetrathionate ion is

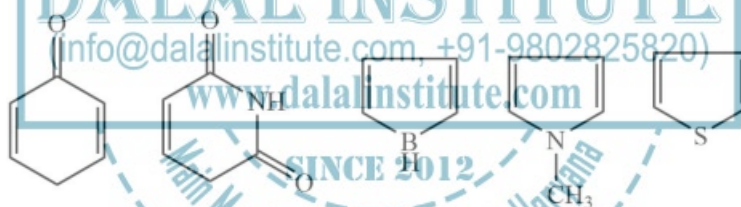
Q.43 The number of unpaired electron(s) in K_2NiF_6 is

Q.44 The number of reducing sugars among the following is



Q.45 The maximum number of dipeptides that could be obtained by reaction of phenylalanine with leucine is

Q.46 Among the following, the number of aromatic compound(s) is



Q.47 At an operating frequency of 350 MHz, the shift (in Hz) of resonance from TMS (tetramethylsilane) of a proton with chemical shift of 2ppm is

Q.48 At 298K and 1 atm, the molar enthalpies of combustion of cyclopropane and propane are $-2091 \text{ kJ mol}^{-1}$ and $-2058 \text{ kJ mol}^{-1}$, respectively. The enthalpy change (in kJ mol^{-1}) for the conversion of one mole of propene to one mole of cyclopropane is

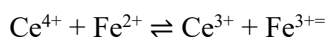
Q.49 For a cell reaction, $\text{Pb(s)} + \text{Hg}_2\text{Cl}_2(\text{g}) \rightarrow \text{PbCl}_2(\text{s}) + 2\text{Hg}(\ell)$, $\left\{ \frac{\partial E^0}{\partial T} \right\}_p$ is $1.45 \times 10^{-4} \text{ VK}^{-1}$. The enthalpy change (in $\text{J mol}^{-1} \text{ K}^{-1}$) for the reaction is

Q.50 For a reaction $2\text{A} + \text{B} \rightarrow \text{C} + \text{D}$, if rate of consumption of A is $0.1 \text{ mol L}^{-1} \text{ K}^{-1}$, the rate of production of C is

Q.51 – Q.60 carry two marks each.

Q.51 The standard reduction potentials of $\text{Ce}^{4+}/\text{Ce}^{3+}$ and $\text{Fe}^{3+}/\text{Fe}^{2+}$ are 1.44 and 0.77V, respectively. The $\log_{10}K$ (K is the equilibrium constant) value for the following reaction is

(Final answer should be rounded off to two decimal places)



[Given: $RT/F = 0.0257 \text{ V}$]

Q.52 A radioactive element undergoes 80% radioactive decay in 300min The half-life for this species in minutes is

Q.53 Silver crystallizes in a face-centred cubic lattice. The lattice parameter of silver (in picometer) is

[Given : Avogadro's number = $6.023 \times 10^{23} \text{ mol}^{-1}$, molar mass of silver = $107.87 \text{ g mol}^{-1}$ and density of crystal = 10.5 g cm^{-3}]

Q.54 The amount of bromine (atomic wt. = 80) required (in gram) for the estimation of 42.3 g of phenol (molecular wt. = 94) is

Q.55 The total number of pair of enantiomer possible with molecular formula $\text{C}_5\text{H}_{12}\text{O}$ is

Q.56 In 200 g of water, 0.01 mole of NaCl and 0.01 mole of sucrose are dissolved. Assuming solution to be ideal, the depression in freezing point of water (in $^{\circ}\text{C}$) will be

(final answer should be rounded off to two decimal places)

[Given: $K_f(\text{H}_2\text{O}) = 1.86 \text{ K kg mol}^{-1}$]

Q.57 The absorption of a gas follows the Langmuir isotherm with $K = 1.25 \text{ kPa}^{-1}$ at 25°C . The pressure (in Pa) at which surface coverage is 0.2 is

Q.58 The separation of 123 planes (in nm) in an orthorhombic cell with $a = 0.25 \text{ nm}$ and $b = 0.5 \text{ nm}$ and $c = 0.75 \text{ nm}$ is

(final answer should be rounded off to two decimal places)

Q.59 A vessel contains a mixture of H_2 and N_2 gas. The density of this gas mixture is 0.2 gL^{-1} at 300K and 1 atm . Assuming that both gases behave ideally, the mole fraction of N_2 (g) in the vessel is

(final answer should be rounded off to two decimal places)

[Given: $R = 0.082 \text{ l atm mol}^{-1} \text{ K}^{-1}$, atomic wt. of hydrogen = 1.0 and atomic wt. of nitrogen = 14.0]

Q.60 Consider an isothermal reversible compression of one mole of an ideal gas in which the pressure of there system is increased from 5 atm to 30 atm at 300K . the entropy change of the surroundings (in J K^{-1}) is

(final answer should be rounded off to two decimal places)

[Given: $R = 8.314 \text{ J mol}^{-1} \text{ K}^{-1}$]



LEGAL NOTICE

This document is an excerpt from the book entitled “IIT-JAM Chemistry Solved Papers”, and is the intellectual property of the Publisher. The content of this document is protected by international copyright law and is valid only for the personal preview of the user who has originally downloaded it from the publisher’s website (www.dalalinstitute.com). Any act of copying (including plagiarizing its language) or sharing this document will result in severe civil and criminal prosecution to the maximum extent possible under law.



This is a low resolution version only for preview purpose. If you want to read the full book, please consider buying.

Buy the complete book with TOC navigation, high resolution images and no watermark.

Home

CLASSES

NET-JRF, IIT-GATE, M.Sc Entrance & IIT-JAM

Want to study chemistry for CSIR UGC – NET JRF, IIT-GATE, M.Sc Entrance, IIT-JAM, UPSC, ISRO, IISc, TIFR, DRDO, BARC, JEST, GRE, Ph.D Entrance or any other competitive examination where chemistry is a paper ?

[READ MORE](#)

BOOKS

Publications

Are you interested in books (Print and Ebook) published by Dalal Institute ?

[READ MORE](#)

VIDEOS

Video Lectures

Want video lectures in chemistry for CSIR UGC – NET JRF, IIT-GATE, M.Sc Entrance, IIT-JAM, UPSC, ISRO, IISc, TIFR, DRDO, BARC, JEST, GRE, Ph.D Entrance or any other competitive examination where chemistry is a paper ?

[READ MORE](#)

Home: <https://www.dalalinstitute.com/>

Classes: <https://www.dalalinstitute.com/classes/>

Books: <https://www.dalalinstitute.com/books/>

Videos: <https://www.dalalinstitute.com/videos/>

Location: <https://www.dalalinstitute.com/location/>

Contact Us: <https://www.dalalinstitute.com/contact-us/>

About Us: <https://www.dalalinstitute.com/about-us/>

Postgraduate Level Classes (NET-JRF & IIT-GATE)

Admission

[Regular Program](#)

[Test Series](#)

[Distance Learning](#)

[Result](#)

Undergraduate Level Classes (M.Sc Entrance & IIT-JAM)

Admission

[Regular Program](#)

[Test Series](#)

[Distance Learning](#)

[Result](#)

IIT-JAM Chemistry Solved Papers

“IIT-JAM Chemistry Solved Papers” is now available, visit our website for more info.

[READ MORE](#)

Join the revolution by becoming a part of our community and get all of the member benefits like downloading any PDF document for your personal preview.

[Sign Up](#)

Dalal Institute's

IIT-JAM

Chemistry

Solved Papers



2011-2020 & Letest Model Test

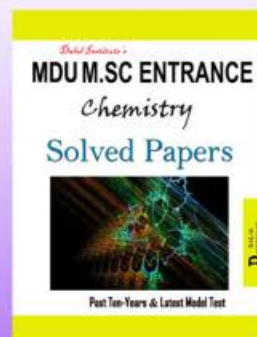
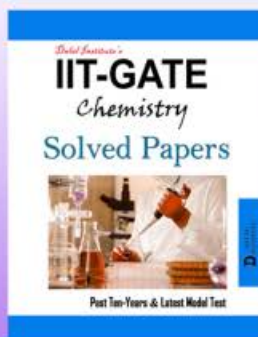
Table of Contents

IIT-JAM: Model Test.....	5
Chemistry	5
❖ Question Paper.....	5
❖ Answer Key	15
❖ Solution.....	16
IIT-JAM: 2011	19
Chemistry	19
❖ Question Paper.....	19
❖ Answer Key	31
❖ Solution.....	32
IIT-JAM: 2012.....	36
Chemistry	36
❖ Question Paper.....	36
❖ Answer Key	46
❖ Solution.....	47
IIT-JAM: 2013.....	50
Chemistry	50
❖ Question Paper.....	50
❖ Answer Key	56
❖ Solution.....	57
IIT-JAM: 2014.....	60
Chemistry	60
❖ Question Paper.....	60
❖ Answer Key	71
❖ Solution.....	72
IIT-JAM: 2015.....	76
Chemistry	76
❖ Question Paper.....	76

❖ Answer Key	88
❖ Solution.....	89
IIT-JAM: 2016	92
Chemistry	92
❖ Question Paper.....	92
❖ Answer Key	105
❖ Solution.....	106
IIT-JAM: 2017	110
Chemistry	110
❖ Question Paper.....	110
❖ Answer Key	123
❖ Solution.....	124
IIT-JAM: 2018	128
Chemistry	128
❖ Question Paper.....	128
❖ Answer Key	142
❖ Solution.....	143
IIT-JAM: 2019	148
Chemistry	148
❖ Question Paper.....	148
❖ Answer Key	161
❖ Solution.....	162
IIT-JAM: 2020	166
Chemistry	166
❖ Question Paper.....	166
❖ Answer Key	181
❖ Solution.....	182

The best institute for CSIR-JRF, UGC-NET, IIT-GATE, IIT-JAM, UPSC, GRE, IISc, TIFR, DRDO, BARC, JEST, ISRO and all Ph.D-M.Sc entrance examinations where chemistry is a paper.

***Dalal Institute's
other publications in this series***



**D DALAL
INSTITUTE**

**Main Market, Sector 14, Rohtak, Haryana 124001, India
(info@dalalinstitute.com, +91-9802825820)
www.dalalinstitute.com**